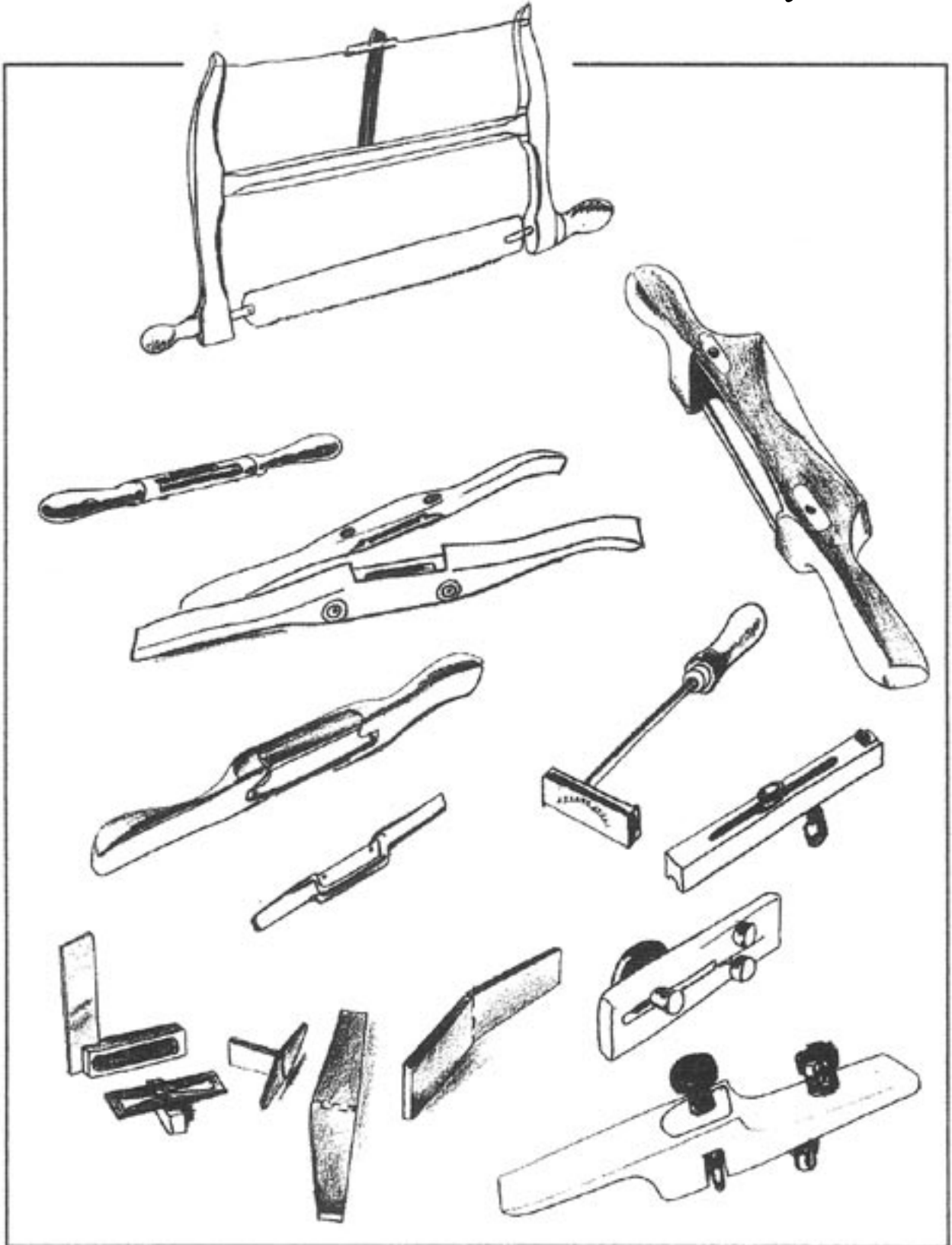


WOODJOY[®] TOOLS

Fine Tools to Enhance Your Skill & Ability



Cover by Preston McClanahan KOW

www.woodjoytools.com
P.O. Box 204 Swansea, MA 02777
MADE WITH PRIDE IN THE U.S.A.

Spokeshaves

Performance Spokeshaves



We are proud to offer a new line of professional spokeshaves. The innovative micro-adjust top access hex key blade adjustment system is the quickest way to fine tune a spokeshave with precision. All of the Woodjoy® Spokeshave models come with this time proven method of blade adjustment. The hex key has a notable advantage over hand tightening the blade in that it only takes a tweak to lock the blade securely in place. The Woodjoy® system also eliminates the need for threaded posts or tangs on the blade; a benefit you will appreciate when sharpening the blade. The 1/8" thick brass sole is longer than the mouth opening, this feature allows the location of the screws outside the cutting path of the shave, and the benefit is an uninterrupted smooth contact with the work piece. An exceptional body form is featured in hard maple in the smaller sizes and cherry is used in the larger 3 and 4 inch heavy series sizes. Our extra thick A2 steel blades round off the high quality built into this performance line of spokeshaves. Performance spokeshaves are available with 1", 2", 3", 3" heavy and 4" heavy blades with your choice of flat or compass bottom soles. - \$75-\$120

Circular Shave

The inside curves in areas such as chair seats and legs present a well known challenge to woodworkers. With its ability to slice wood with a rolling action, this spokeshave excels in shaving these difficult areas. The 5/8" round body and a 2" A2 steel low angle blade allow the woodworker to change the angle of cut in an instant and with exact control. Handsome maple handles compliment a precision machined brass body. The 5/32 "thick blade is 25% thicker than other blades in the market place. The Woodjoy® blade depth adjustment system, located at the top of the tool is an exclusive part of our spokeshave product line. - \$89



Master Spokeshave

The Master spokeshave is a sleek, versatile, professional shave that is designed to be compact yet robust. At 12" long and only 1" wide it has a good feel, balance, and heft. The blade has a radius on the top back edge that allows the tool to reach into curves and tight areas with ease. The 3" A2 cutting blade is adjusted from the top making fine tuning a snap. As an added bonus an innovative combination brass sole is featured with a compass on one side and flat on the reverse side. Made in cocobolo. Awarded the title of "Best Overall" Spokeshave in a review by Fine Woodworking Magazine issue #185. - \$100

Deluxe Big Shave

Featuring a brass inlay and a captured adjustment screw for a clean smooth top, this shave is a large well-balanced workhorse that swiftly removes shavings. A serious tool, comfortable to hold, with top adjusting screws for ease of fine tuning the cutting blade without removal. Dimensions are: 15"L x 2" W x 1" thick body; blade is 6 1/2" L x 3/4" W x 3/16+" thick, 5" cutting edge A2 steel Rc62. We also offer a Standard model which is identical, minus the brass inlay and captured screw. Both models are made in Brazilian cherry with a substantial brass sole installed - \$125-\$150

The Mini Spokeshave

At only 5 3/4" long, and less than 3/4" wide, the low angle, compassed sole bronze "Mini Shave" has quickly become a favorite tool among woodworkers for detail work. The one inch cutting blade, a mere 3/8" wide, has the same quick top adjustment features found in our larger shaves and cuts with ease and precision. - \$75

Woodjoy® Tools is proud to announce an outstanding addition to our line of spoke shaves with the introduction of the #85. The #85 was the largest of the STANLEY series of wood body, low angle, RAZOR'S EDGE spoke shaves. While our new tool takes advantage of the best features of this very desirable old shave, it improves on the materials and design. Chief among the improvements is a one piece, A2 steel blade which is cryogenically treated. The steel is hardened to RC 60-62; it is hollow ground on two sides for a true razor edge and performs at the highest level. The blade is easily adjusted, to permit a wide or narrow mouth opening or to compensate for blade wear. There is a precision machined, movable brass sole allowing for fine adjustments to the cutting depth. This has the same effect as raising or lowering the blade. With the combination of the two adjustments a fine or coarse shaving can be produced. A finely tuned #85 excels at cutting end grain. The body features brass threads to hold the blade and sole. A further design improvement exclusive to Woodjoy® is a relief milled under the blade for efficient shavings ejection. We are delighted to make this trusted, old spoke shave available once again. The blade has a cutting length of 2 1/2" long and is 5/32" thick. The body is made from Brazilian Cherry, and measures 12". - \$95

NEW!

#85 Spokeshave



Classic Bowsaws

A sturdy rendition of a traditional saw, combining the best features of several early saws. The design has fine curved lines. Features include: a half turn tensioning mechanism, a generous amount of waxed twine allowing tensioning with less turns, a 6 TPI x .035 thick blade for better tracking, and tight fitting octagon handles for control and a firm grip. Offered in both 18" & 24" sizes. Made from select hard maple and other hard woods.

This smaller bowsaw has all the curves of a classic antique and the features of our larger saws including a half turn tensioning tab and waxed twine. The classic bowsaw comes fitted with either a wide universal turbo-cut blade or a narrow jigging turbo-cut blade. The blades are made in Japan, have razor sharp teeth, and work best on the pull stroke. The universal turbo-cut blade is used for both ripping and cross cutting. The jigging turbo-cut blade is approx. 3/8" wide and is used for cutting tighter radius work. The saws are made from select hard maple with tight fitting mortise and tenon joints combining great style and balance. With a thin kerf blade, they cut very fast and are simply a joy to work with. - \$110-\$130



Scrapers



Flat Sole Gunmaker's Scraper - NEW!

The creation of this tool was inspired by an example of an old tool found in a gunsmith's shop. It is comprised of a narrow, long body featuring a brass sole, which houses a 1/16" thick, premium A2 blade, cut on a 25 degree bevel. This works marvels removing tool and saw blade marks. A very attractive and comfortable hardwood body rounds out this great addition to our line of scrapers.- \$75

Standard Scraper

A spokeshave-like scraper featuring a brass compass sole and a burnished hook blade built for utility use such as finish work before sanding. A neat scraper fitted with the same quality as our other scrapers, with a 1/8" blade machined to a 25-degree bevel and heat-treated to a RC 56. The body is made from select hardwoods. This tool has a heavier body than either the Gunmaker's or Chairmaker's scrapers. - \$75

Chairmaker's Scraper

This scraper will take off fine shavings and is often faster than sandpaper. A pleasure to use on a variety of wood detailing applications. Made from select hardwoods.- \$75

Gunmaker's Scraper

This highly versatile tool belongs in every woodworker's toolbox. The body is 12" long, with a brass compass sole and a tool steel blade made to reach into tight areas for delicate finish work. A wonderful tool to own and a joy to use.- \$75

Specialty Tools

Chairmaker's Router

Cut consistent grooves in chair seats as well as other work where and when desired. This unique tool features a reversible fence, making it equally adaptable to straight or curved work. The adjustable U-shaped cutter can take a light or heavy pass, depending on wood type and grain.

Cut in either direction without moving the fence by simply reversing the cutter. Two years in the making, this tool is a Woodjoy® exclusive. - \$95

Double Fenced Scratch/Beading Tool

Cut parallel lines in straight or curved work with contact points on two sides of your work piece. Features a tool steel cutter, one adjustable brass fence, and two brass fixed points to position from. The cutter is adjustable in two directions. A maple body is standard, and fixed points are removable. - \$45

Branding Irons

Custom irons, including block letters, logos, signatures, interchangeable date brands and the "Tatman" for Windsor Institute Alumni.

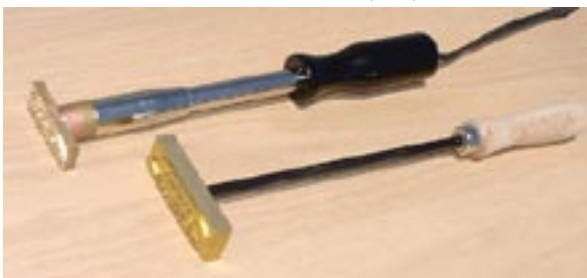
Torch and electric models available - \$49-\$190



Woodjoy® Tools Replacement Blades

Replacement A2 cryogenically treated Spoke shave blades come standard hollow ground on two sides for the best quality in cutting, efficiency, and ease of sharpening. Available in 1", 2", 2 1/2", 2 3/4", 3", 3" heavy, 4" heavy, and 5" heavy sizes. Want to make your own shave? Try using the top of the line A2 blades we offer and finish with a better shave. See price list.

Turbo-Cut bow saw blades are available in 400mm universal and jigging and 600mm in universal, rip or cross-cut. These are great replacement blades that you can use to make your own saw. Rule of thumb for measuring: 25mm = 1 inch approx.



MARKING AND MEASURING

Total Square

This is the little square that could. Measure without use of a scale, as well as check for square. An ingenious combination of geometry enables the user to accurately gauge measurements of 1/16", 1/8", 3/16", 1/4", 5/16", 3/8", 7/16", 1/2", 9/16", 5/8", 3/4", 1", 2", 3", 4", and 5". Some typical uses are as a story stick, thickness gauge, and a setup block for width, depth and height. This well-balanced square fits right in the palm of your hand as well as comfortably in your pocket. Its features will soon have you wondering just how you ever worked without this 'old friend'
- \$49

Dovetail Layout Gauge

This handy tool, measuring 3" L x 2 1/4" W, is small enough to leave in your shop apron. It combines a 1:6 and 1:8 dovetail layout in addition to its use as a square. A very unique and useful layout tool which will quickly become a trusted and familiar helper. The gauge's brass beam attached to a corrosion resistant black oxide steel body lends smart style in addition to utility. - \$25



Marking/Cutting Gauge

Features a double sided reversible fence for marking lines in both straight and curved work. The 1/2" wide cutting blade is made of hardened tool steel, ground to a point, with a double bezel on one side for cutting in either direction. The blade is easily removed for adjustment and sharpening. The standard body is Brazilian cherry. Another new finely crafted tool, a sure favorite for the noble work of traditional joinery.
Price: \$59.00 for Cherry, \$69.00 for Cocobolo



Dovetail Saddle Square

A simple, unique, tool that accomplishes a variety of woodworking tasks. As implied by the name, it is a saddle square used to mark straight lines around adjacent sides. Each leg has a straight edge on one side and a dovetail angle on the other. As a dovetail layout tool, it accommodates softwoods and hardwoods using 1:6 or 1:8 ratio respectively. The ability to lock the tool in position at any angle from 0 to 90 and 90 to 180 degrees makes this an outstanding tool. This feature allows the tool to be used as a transfer bevel. Align the tool on a drawing or workpiece, lock in the desired angle, and simply transfer the angle to setup your machine or layout. Made from brass with a stainless steel locking screw. Dimensions: each leg is 3 1/2" L x 1 1/4" W x 1/4" thick. - \$60



Double Dovetail Square

With one tool, you have the ability to mark dovetails up to 2 1/8" long in both 1:6 (softwoods) and 1:8 (hardwoods), check for square, and mark straight lines. A good value for a tool with this rare combination. Precision ground quality steel, pinned together with three steel dowel pins. - \$44



Precision Dovetail Template

With this compact tool, a woodworker can mark up dovetails of up to 1 3/8" rapidly and with impeccable accuracy. A precision machined brass body lines up exactly into a black oxide template, providing both 1:6 and 1:8 angles. This innovative design allows streamlined and efficient layout of both the angle and the straight lines. Simply lay the straight brass body and the template of the size angle required on the wood to be marked up. A hole in one side of the template has been added for a quick and easy way to distinguish the 1:6 from the 1:8 angle. Keep one in your shop apron for handy access to this great mark up tool. - \$25

All Woodjoy® tools are made with pride in the U.S.A. !
Visit www.woodjoytools.com or call us at 508-669-5245 today!